

New Technological Challenge of Geospatial Information Platform (V-world) in South Korea?

InSu, LEE & DekKie, Tcha

May 25, 2015

Spatial Information Research Institute,
Korea Cadastral Survey Corp, KOREA

Contents

- V-world overview
- Study overview
- Study results
- Concluding Remarks

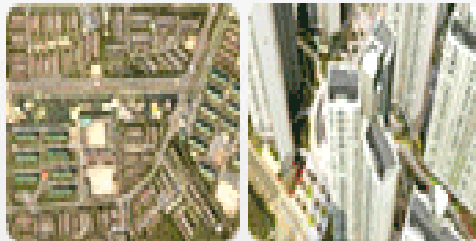
Definition

National Geospatial Information Open Platform for Private (V-World)

Real World imagery



Physical component



Logical component



Concept

V-World

Service



New Service

User

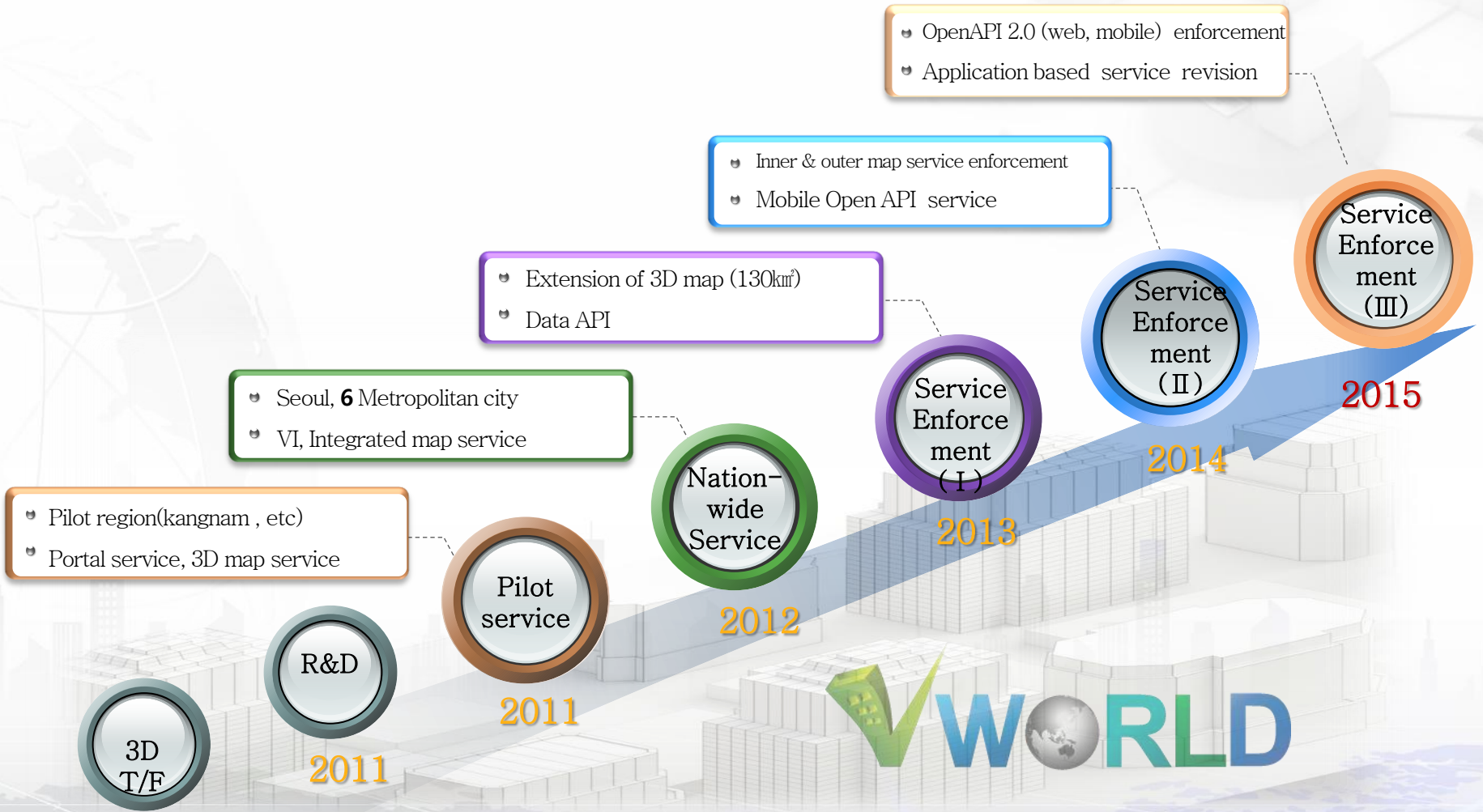


New Service Infra

Platform



History



Data provided



Data provided - overseas

Supporting the overseas expansion strategy

Satellite Imagery (World)

GSD 15m

GSD 500m

Overseas' country



(Tokyo Station, Japan)



(Sydney, Australia) (London, England)

Data provided – Antarctic base

Satellite Imagery

- GSD : 50cm
- Area : 242km²
- Date : 2013

POI

- 204 POI

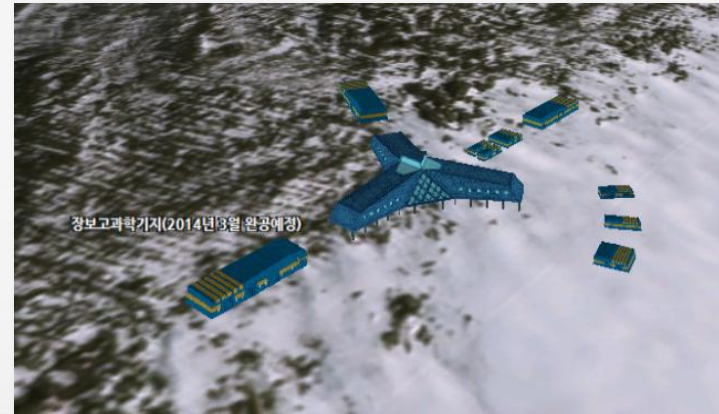
3D GI

- 3D Bldg. LOD 2
- DEM : 5m

<Korea Antarctic Research Program



<Jang Bo-go Antarctic Research Station>



Data provided – N. Korea

Satellite Imagery

- GSD : 50cm ~ 1m
- Date : 2011~2012
- Area : 10,800 km²

POI & Hybrid map

- (Approx. 29) POI
- Hybrid map & update

<Satellite imagery>



<Hybrid map>

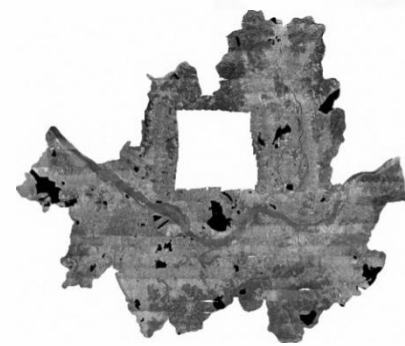


Data provided – Time series aero photo

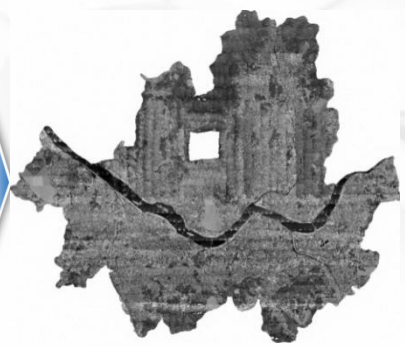
Time series (Seoul/Busan/N.Korea)

- Map By Times series
- Orthophoto mapping by chronicle
- Loading Times series map to V-world

※ Seoul(78, 89), Seoul(50)), Pyongyang.(50) #15 regions

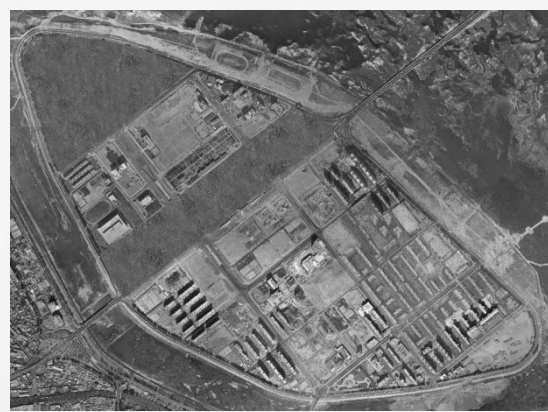


<1978, Seoul: aero photo>



<1989, Seoul>

Inquiry service



<1978, Yeouido>



<1989, Yeouido>



<2009, Yeouido>

Data provided – Fundamental GI

6 GI (2015.3)

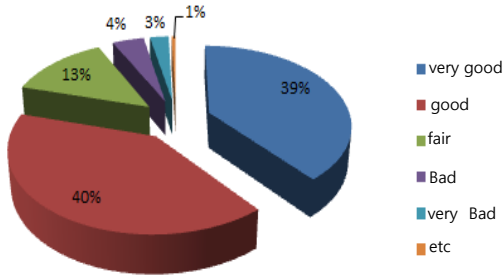
#	GI themes		Attributes1)
1	Aero photo		R
2	Satellite imagery		R
3	Topography		R
4	3D Building		3D
5	POI		P
6	Map	Background	R
		Hybrid map	R

39 GI w.r.t administration (2015.3)

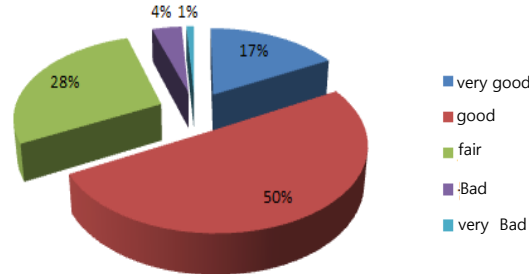
#	GI themes	Attributes1)
1	Zoning ²⁾	G
2	용도지구도 ³⁾	G
3	용도구역도 ⁴⁾	G
4	연속지적도	G
5	건축물정보	A
6	토지이용현황	A
7	산사태위험지도	G
8	사업지구경계도	G
9	토지이용계획도	G
10	공시지가	A
11	교통CCTV	G
12	소방서관할구역도	G
13	등산로	G
14	산업입지도	G
15	농업기반시설도	G
16	보호시설도	G
17	도로명주소	G
18	행정구역도	G
19	보행우선구역	G
20	국가교통정보	G

Background (1)

Map service

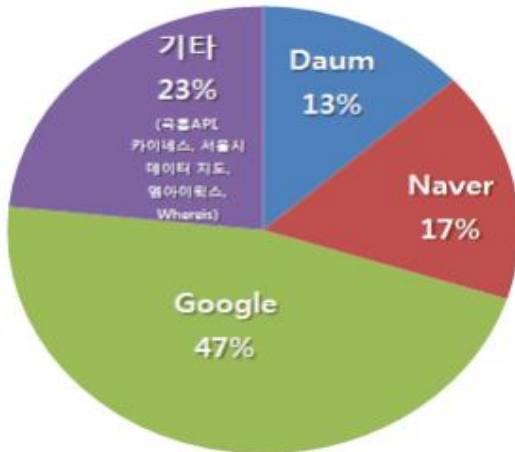
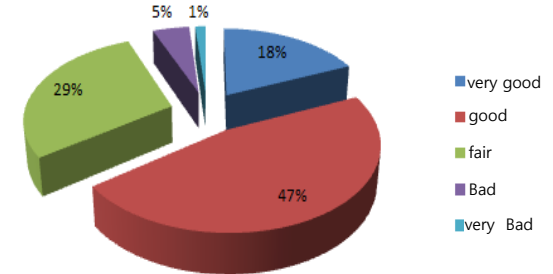


Service data

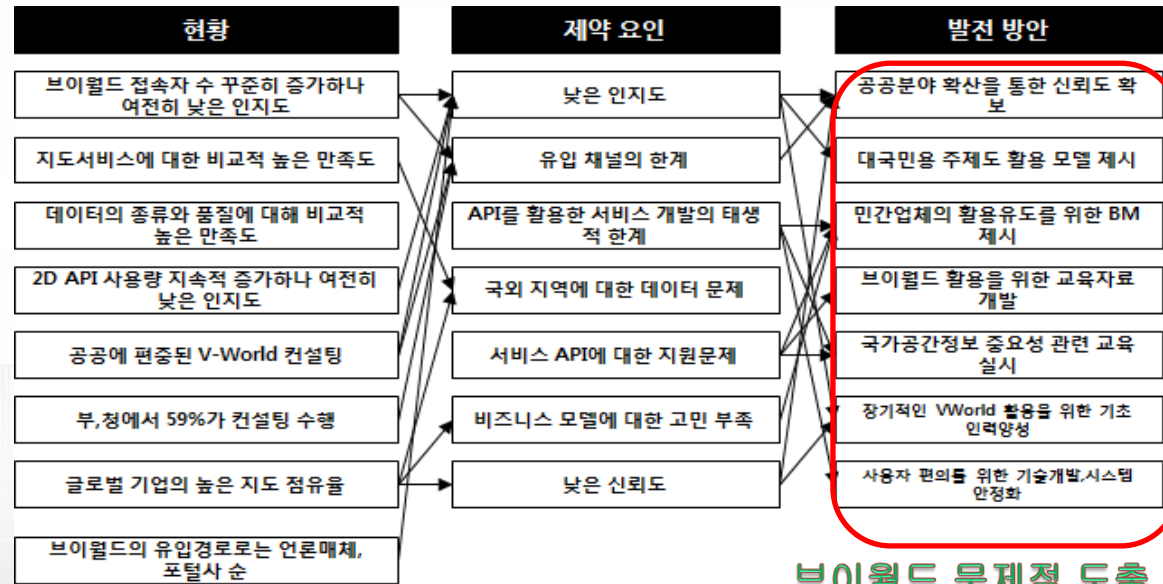


2013 late (courtesy of survey by SpaceN)

Service data quality



~ Background map (2013)



브이월드 문제점 도출

Background (2)

V-world* server, almost down for due to a keen interest, N. Korea's image open, and the multi-access of user at the same time.



2013. 9 (254 #)

* National Geospatial Information Open Platform

Aims

- **Dealing with new challenges** of V-world
 - Re-adjustment of its architecture
 - SW performance reinforcement
 - Introducing web standard
 - Data interoperability technology

- **Suggesting the reasonable Plans**

Scope of V-World technology enforcement

1 INFRA

2D/3DEngine



OpenAPI enforcement



Mobil
e



Web standard

Architecture



OpenAPI
Based on
Web Standard



Stable service providing &
Applying for next generation's
web service

2 DATA



Manufacture



Crowd sensing



Editing Tool



Hybrid DB



Hyper Spectral Imaging

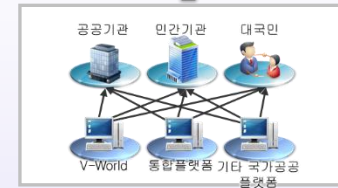


Acquiring & manufacturing
the stable data

3 STRATEGY



Strategy development



Connecting with Public Platform



Overseas' exporting

Application Increase in
Private/Public sector

INFRA - Architecture & SW enforcement

V-World Infra

Use of ActiveX Plug-in
(3D GI service providing)

Error in Plug-in setting
Plug-in service stopping for
Web browser
Security concern for Plug-in

Lack of High precision
2D/3D GI Data processing
technologies

High precision and bulk of
GI data

Extension of system since
pilot project (2001)

Lack of system architecture
Incompletion of system
performance/capacity,
Obstacle management in real-time

Cross OS Platform/Browser,
Mobile

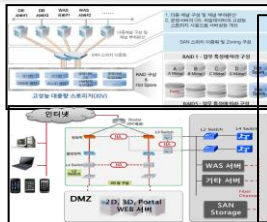
Displaying high precision
2D/3D GI Data simply

Incensement of user &
contents
Difficulties of system
extension

Engine · S/W · Architecture of
V-World

INFRA - Architecture & SW enforcement

V-world GI Architecture



- Service delay due to traffic
- Lack of data security and response
- Lack of architecture roadmap in system extension

V-world GI SW



- MS Windows based GI service (Plug-In)
- Few Open API, Web Service API connection

High precision 2D/3D GI processing



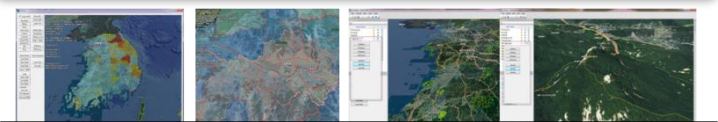
- Speed slowness in 2D data when combined
- Lack of combining vector with topography

Architecture enforcement

V-world SW development based on web standard

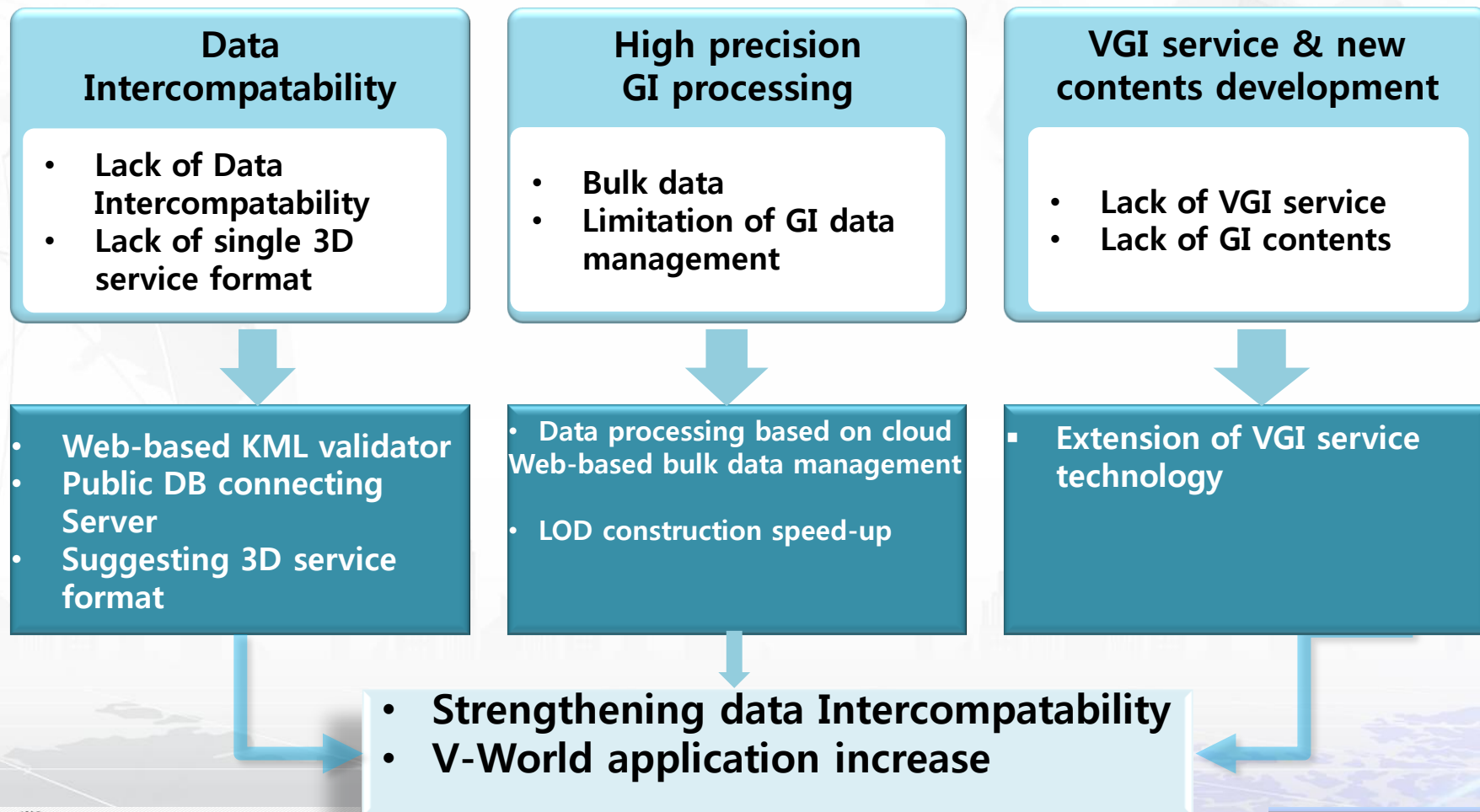
- Open Platform based on web standard (No Plug-In)
- 2D/3D service (+mobile) based on Cross platform/browser
- Extension of Open API based on web standard (HTML5)

Speed-up of mash up of high precision 2D/3D

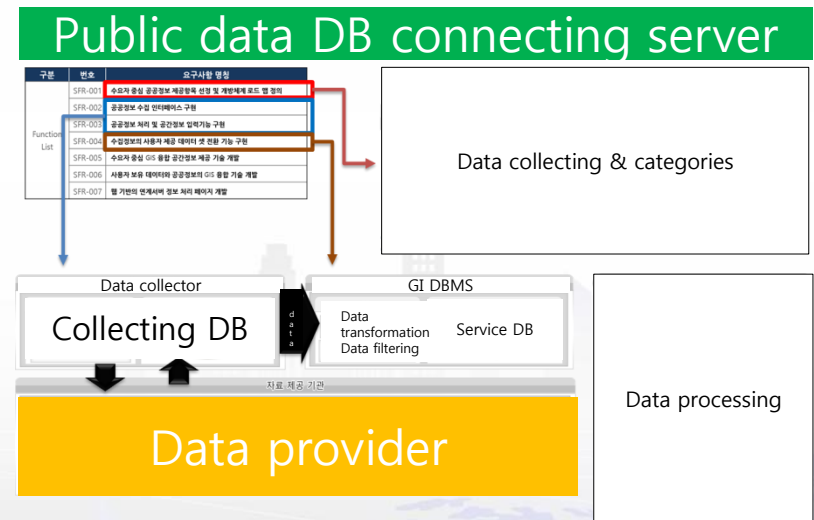
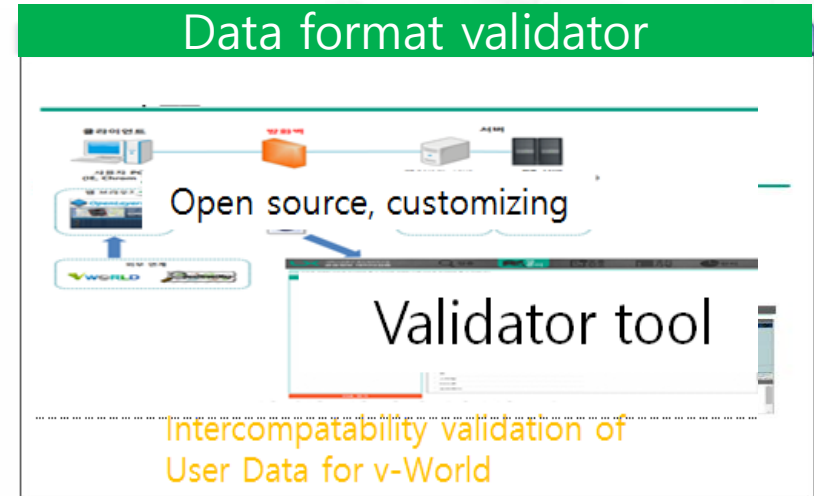
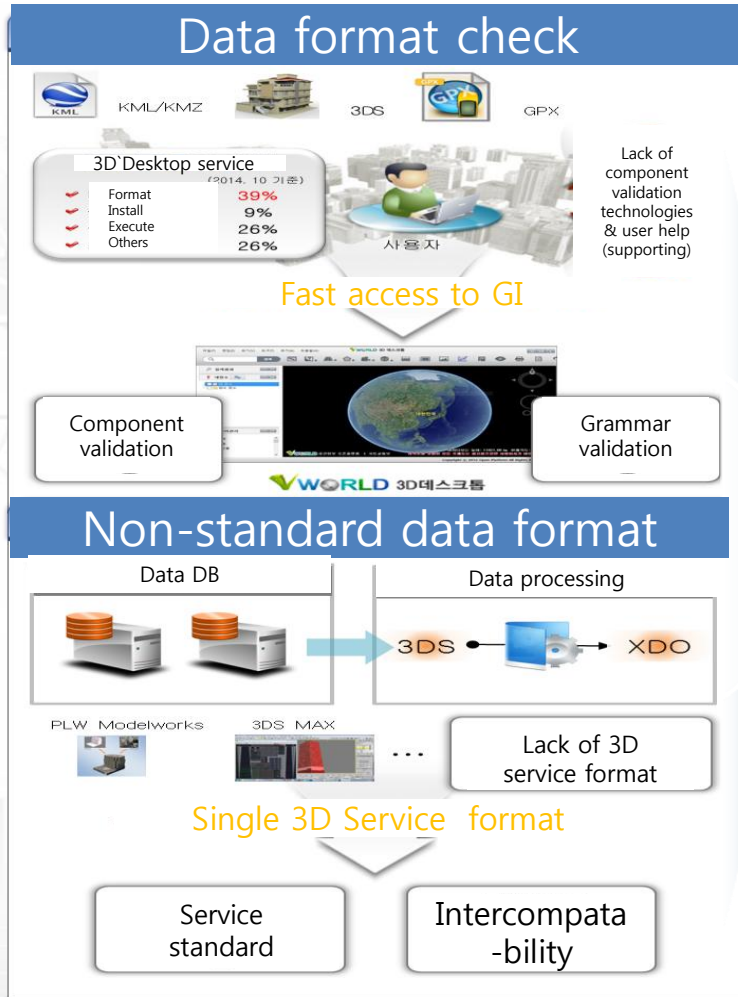


- Speed-up when combine 2D data (20%)
- Combination of vector with 3D topography in real-time

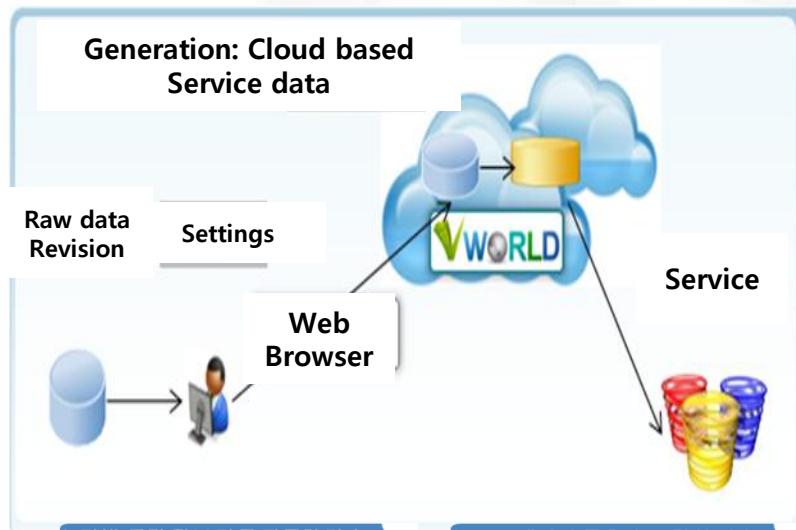
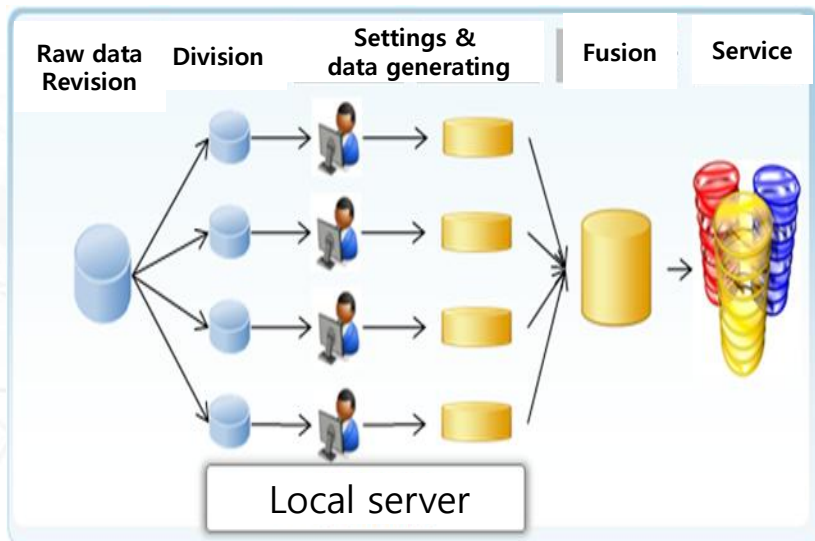
V-World Data & Contents



DATA - Intercompatability, Validation, Public Data Connection



DATA – Manufacturing automation & Speed-up



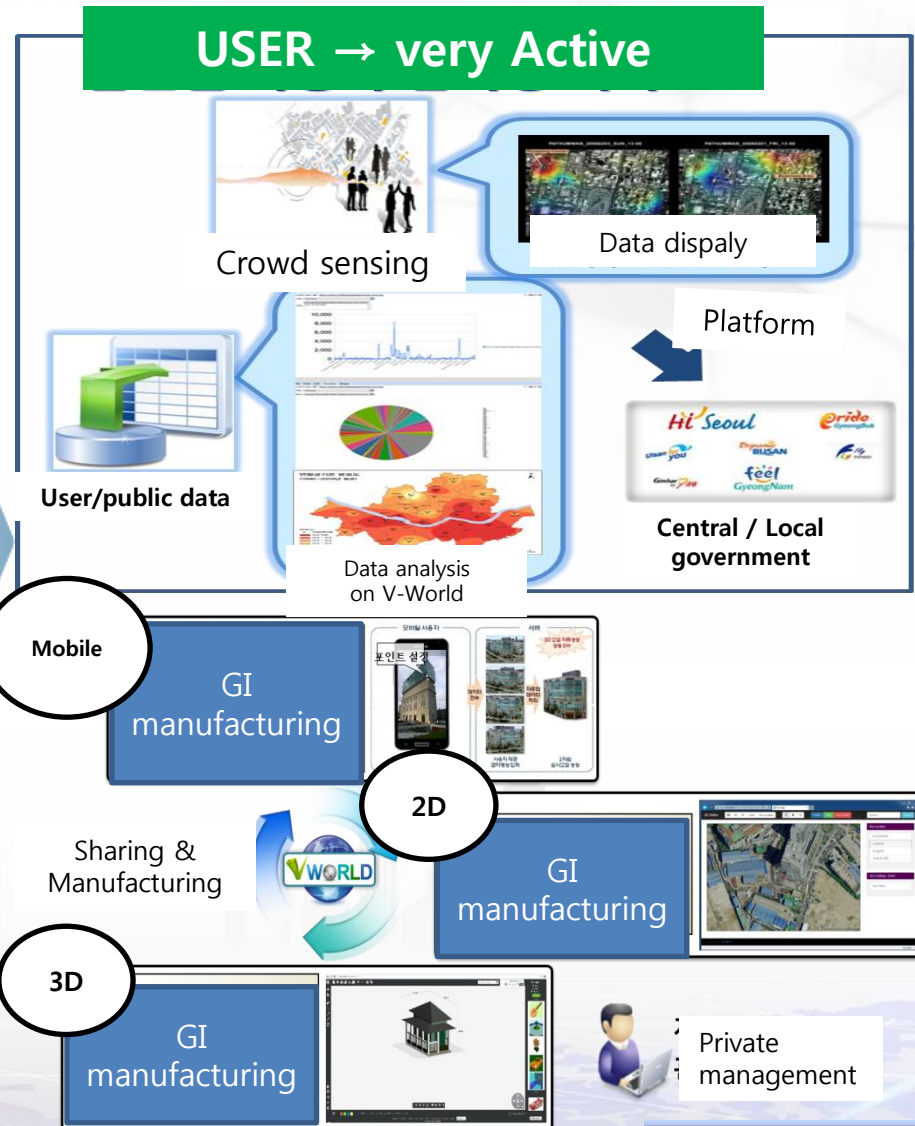
기반 공간 정보 가공 자동화 기술

가공 자동화 기술	자동 가공을 통한 가공 작업 효율 증대(100%적용)
웹 기반 가공 기술	작업자 작업 관리 및 작업 현황 모니터링(100%적용)
대용량 원시 자료 관리 기술	작업 전후 대용량 데이터 관리 향상(100%적용)
관리 표준화 표준포맷 지원 기술	가공 작업의 일관성 제공 및 고품질 자료 활용성 증대(시설물)(100%적용)

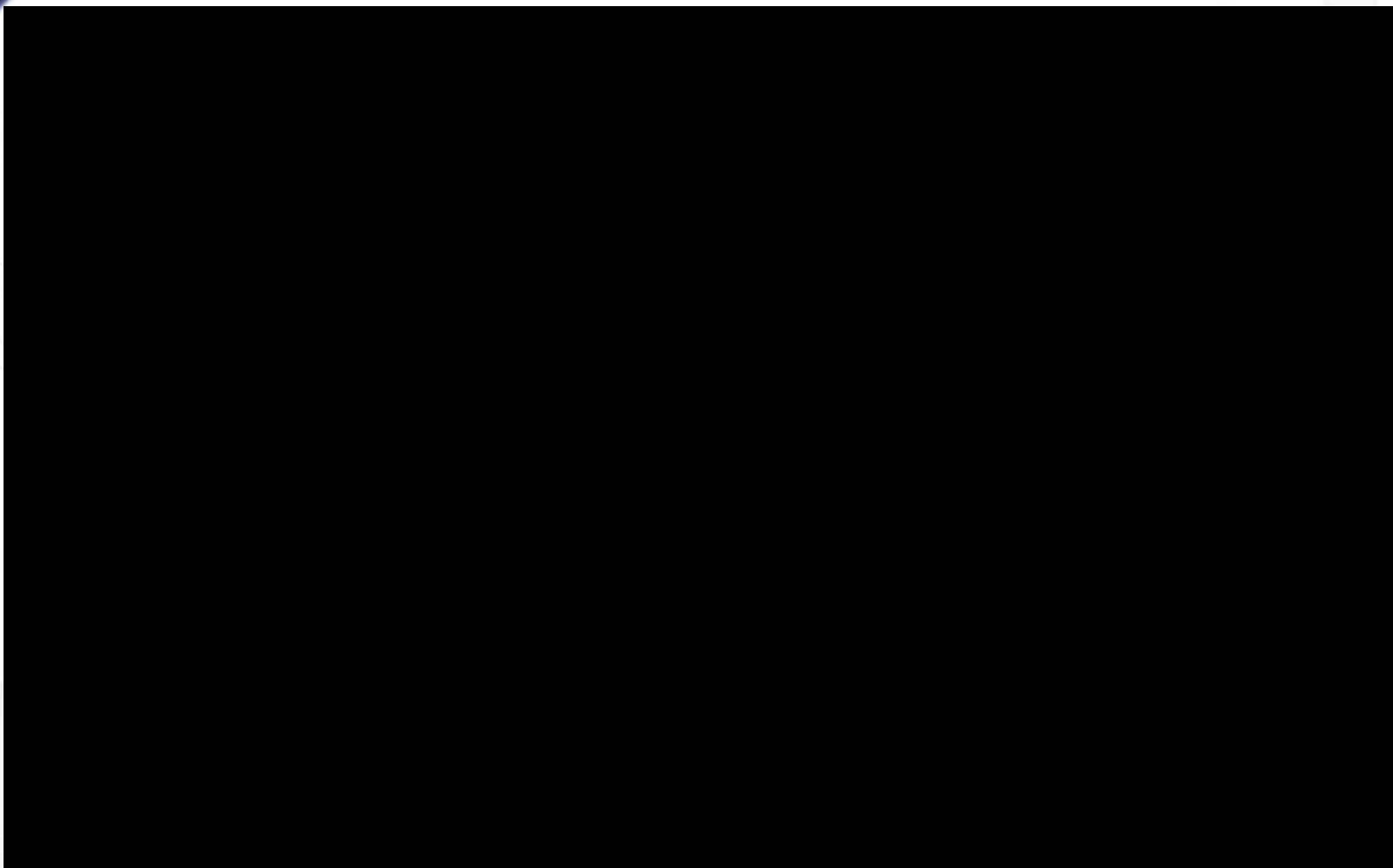
LOD 데이터 구축 속도 향상 기술

멀티모어 병렬처리 기술	작업 시스템 자원 활용 극대화(50%향상)
분산 처리 가공 기술	공간 자료 가공을 분산처리하여 가공 시간 단축 및 쉬운 장비 확장(50%향상)
분산처리 가공관리 서버기술	원할한 분산처리 가공 작업 수행 지원(50%향상)
LOD 자동 생성 기술	LOD 생성 속도 향상을 통해 가공 시간을 단축(50%향상)
모바일 플랫폼 적용 기술	모바일 서비스를 위한 자료 경량화 및 최적화 가공(20%향상)

DATA – GI analysis & prediction, VGI



2D/3D / Bldg Rendering SW prototype based on WebGL



Courtesy of
ETRI

OpenAPI extension SW based on HTML5

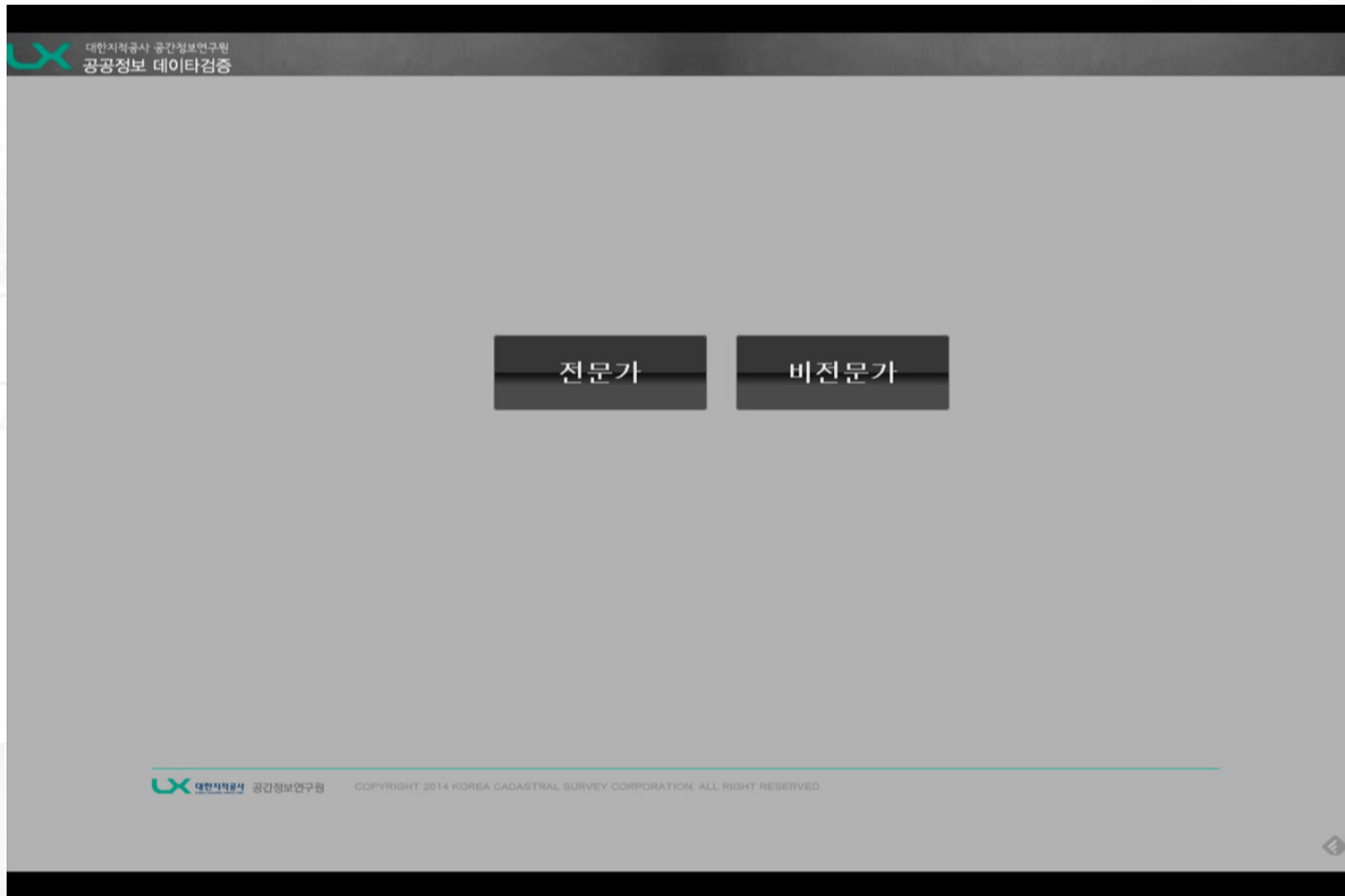
Courtesy of
ETRI

High precision 3D topo+ User GI Mash-up S/W prototype

이미지 메시업

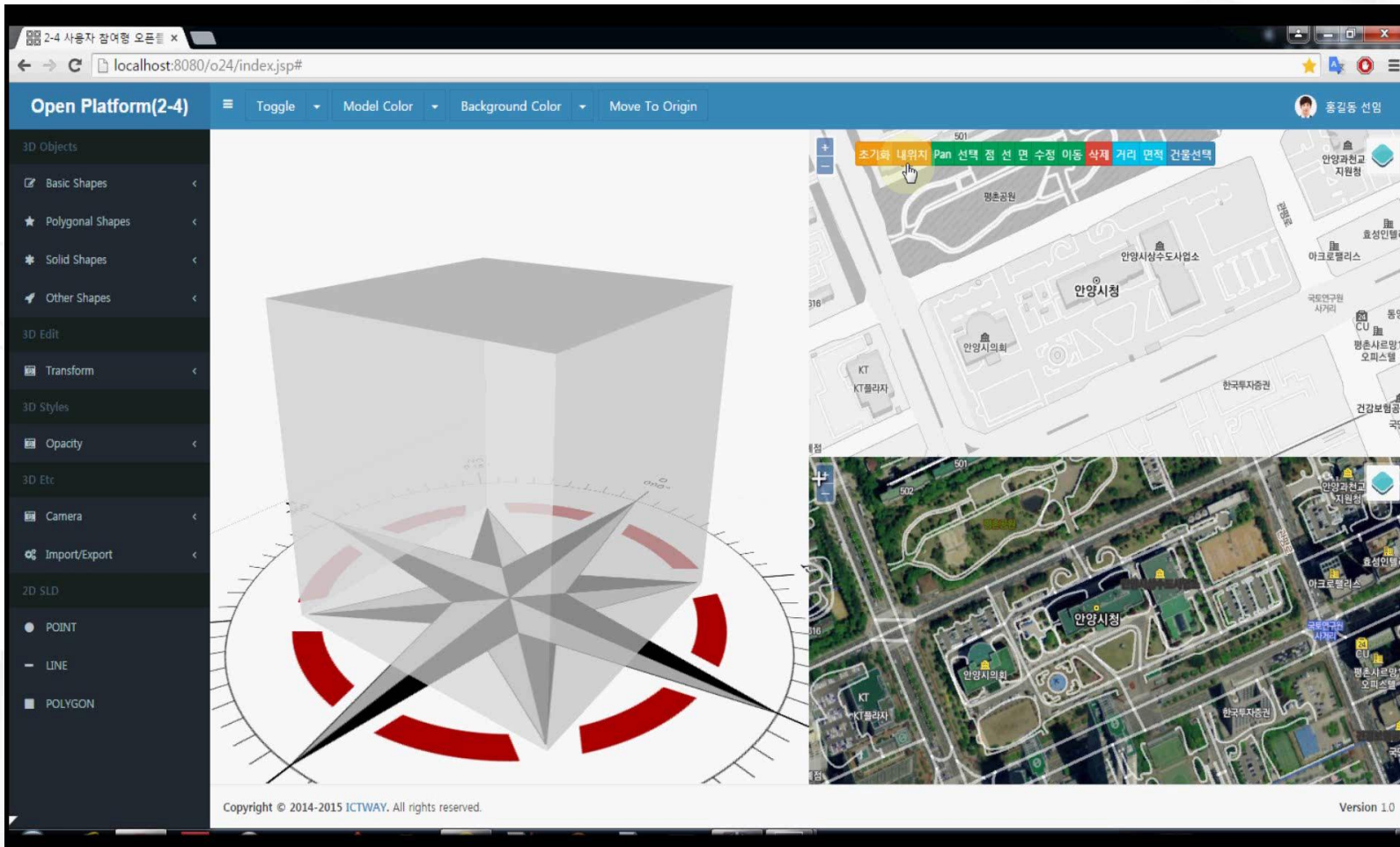
Courtesy of
EGIS

Web-Based KML Validator



Courtesy of
LX SIRI

2D/3D GI generation and update based on Web Browser

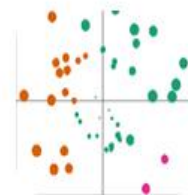
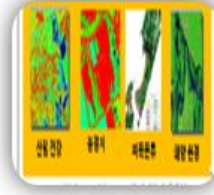


Courtesy of
ICTWAY

Concluding Remarks

Developed V-World

Service



New Service

User

Personnel

Idea

Enterprise

contents · Biz

New Service Infra

Platform

Service

map

SW

Data

VI

GI

2D / 3D. Spatial-Temporal

Attribute/VI/HSI

Infra

HTML5/WebGL

Cloud

Open Source & standard

Acknowledgement

This research was supported by a grant(13 AUDP A02) from Architecture & Urban Development Research Program funded by Ministry of Land, Infrastructure and Transport of Korean government.